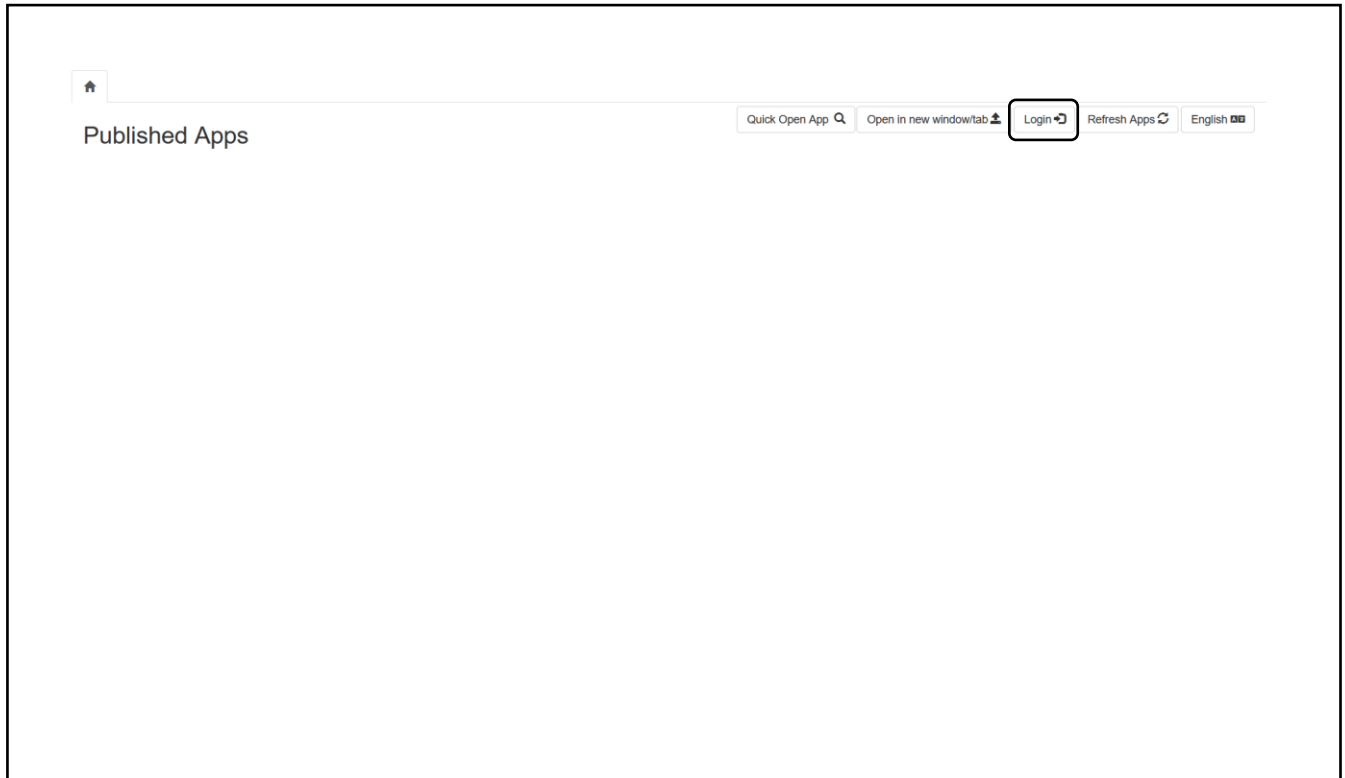


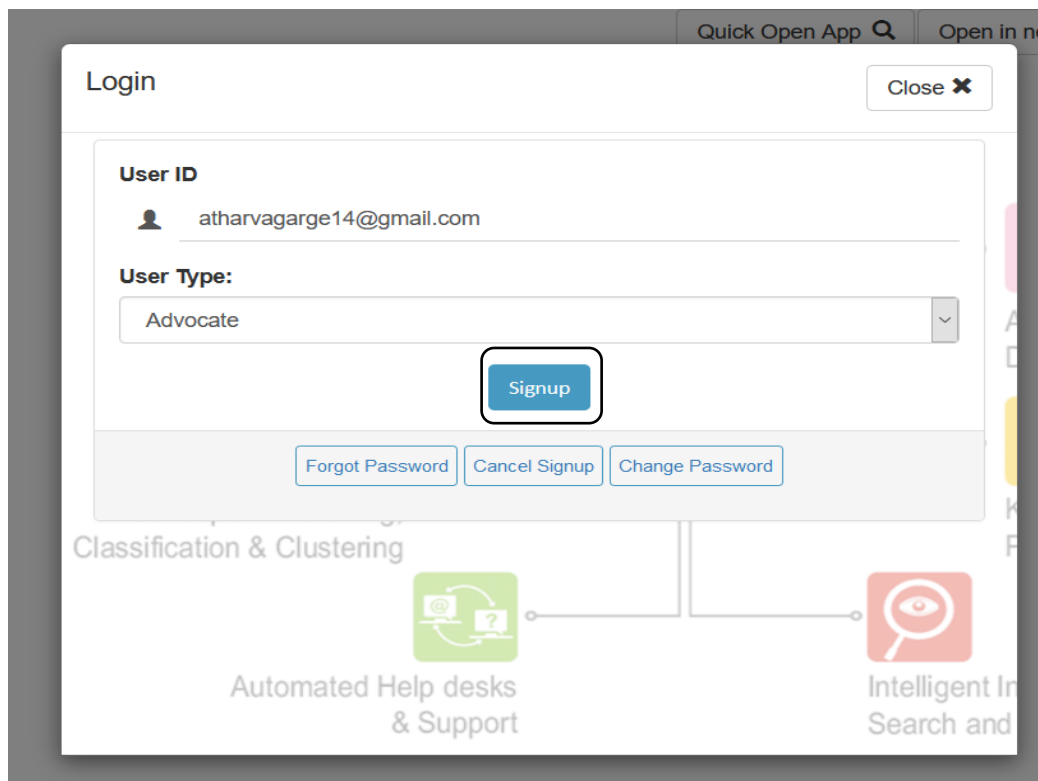
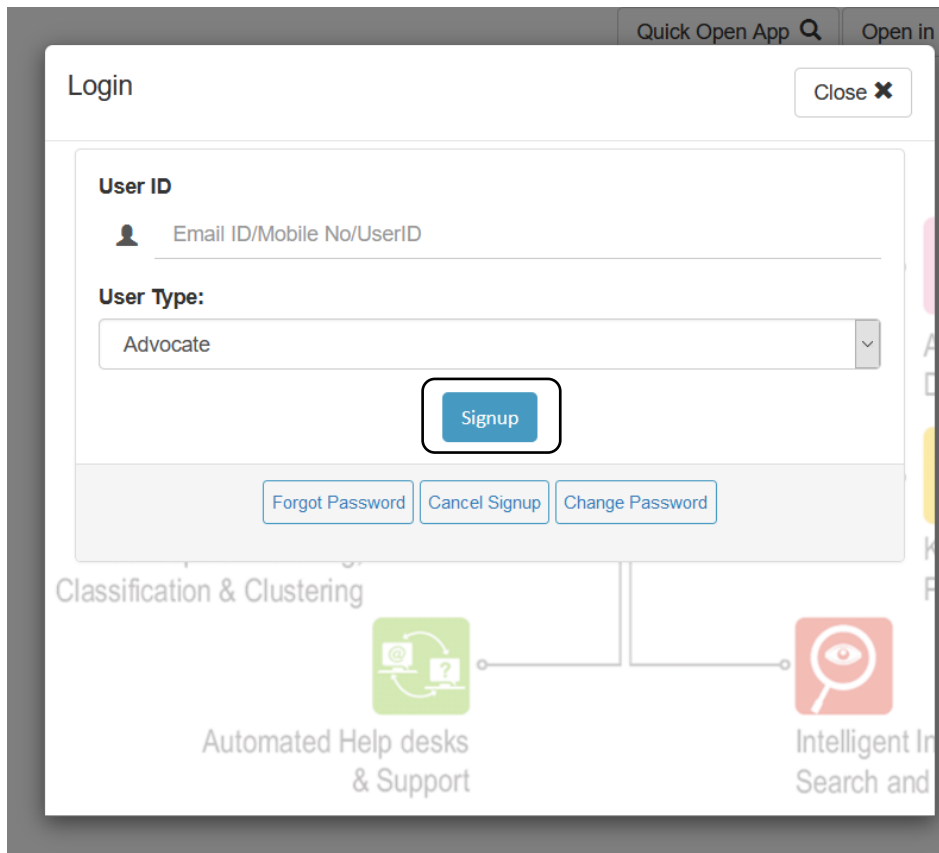
1. Main page. Click on **Login button** on **top right corner**.



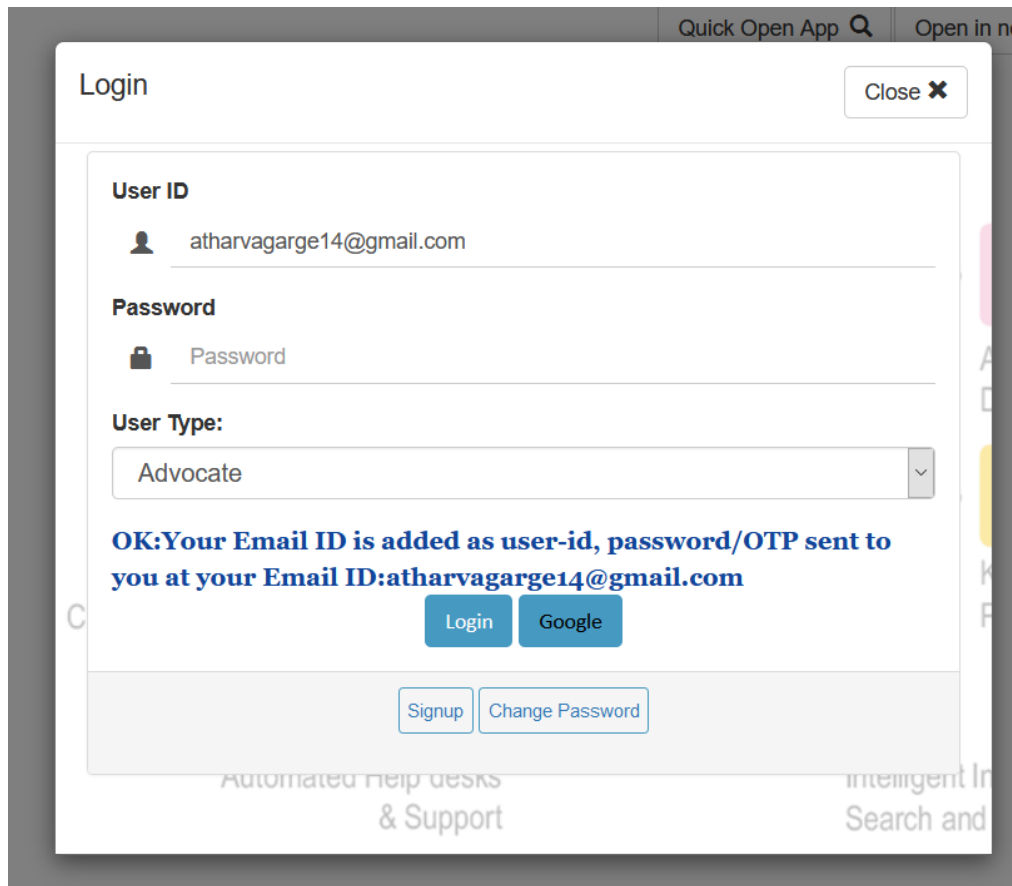
2. Click on signup button.

The image shows a web browser window displaying a login form. The form is titled "Login" and has a "Close" button in the top right corner. It contains three input fields: "User ID" (with a person icon and placeholder text "Email ID/Mobile No/UserID"), "Password" (with a lock icon and placeholder text "Password"), and "User Type:" (a dropdown menu currently showing "Advocate"). Below these fields are two blue buttons: "Login" and "Google". At the bottom of the form, there are three buttons: "Forgot Password", "Signup" (which is highlighted with a black border), and "Change Password". The background of the browser window shows a search bar at the top and some text at the bottom: "Automated Help desks & Support" and "Intelligent In Search and".

**3. Enter your Email id and click on signup button.**



4. After click on **signup** button, you will receive **password** on Your **registered email address**.



Quick Open App 🔍 Open in n

Login Close ✕

**User ID**  
👤 atharvagarge14@gmail.com

**Password**  
🔒 Password

**User Type:**  
Advocate ▼

**OK:Your Email ID is added as user-id, password/OTP sent to you at your Email ID:atharvagarge14@gmail.com**

Login Google

Signup Change Password

Automated help desks & Support

Intelligent In Search and

5. Enter password and **click on login** button.

Quick Open App 🔍 Open in ne

Login Close ✕

**User ID**  
atharvagarge14@gmail.com

**Password**  
••••

**User Type:**  
Advocate

**OK: Your Email ID is added as user-id, password/OTP sent to you at your Email ID: atharvagarge14@gmail.com**

Login Google

Signup Change Password

Automated help desks & Support Intelligent In Search and

6. Login Successful.

Quick Open App 🔍 Open in ne

Logout Close ✕

**User ID**  
atharvagarge14@gmail.com

**Password**  
Password

**User Type:**  
Advocate

**OK: Login is successful. Close login window to view your apps.**

Log Out

Signup Change Password

Automated Help desks & Support Intelligent In Search and

7. Click on **Enroll App** to start **application**.

